



COMMERCIAL SECURITY • CCTV • WIRELESS VIDEO
TOWERS • RAPIDEYEZ • THERMO SCREEN • HANDHELD THERMAL
TIMELAPSE • FIRE PROTECTION

www.sicuro.co.uk



Leading providers in cost effective security

Specialising in installation, monitoring
and response for a variety of industries



Established since 2012

Sicuro has gone on to build relations with a number of well-regarded clients both regionally and nationally throughout the UK including Redrow Homes, Bellway, Taylor Wimpey, Crown Estates in Regents Park and Balfour Beatty.

We have also been fortunate enough to work on the Queen Elizabeth Olympic Stadium transformation. We now operate nationally, securing over 180 active construction sites at any one time. This is a testament to the service we provide which is unrivalled in the security industry.

The complete site security service

We are a team of highly experienced security specialists, with site security and safety at the core of everything that they do. We thrive to provide a comprehensive and efficient service to our clients, from small private projects to complex industrial and construction developments.



Construction site and vacant property security



We provide site security services throughout the UK to commercial clients, including construction site security, vacant property security, scaffold alarm systems, fire systems and virtual guard systems.

Our security contracts are tailored to your exact needs on a long-term, short-term or one-off basis. Whether you're looking for a full construction site security system, a temporary scaffold security alarm or a virtual guard system, Sicuro are the ideal solution.

To help establish the best possible security solution for you, please call the site security experts on 0800 999 1888.



ALARM **MONITOR** **RESPOND**

0800 999 1888 | info@sicuro.co.uk

www.sicuro.co.uk



CCTV system

We provide temporary CCTV systems to a variety of locations from construction sites to fly tipping zones and even high-risk areas



All systems are remotely monitored by our NSI gold accredited monitoring station and in the event of a genuine security breach an approved responder will be dispatched to site.

With a whole host of products to choose from Sicuro will tailor a system that meets your requirements. Sicuro also provide ANPR camera and time lapse systems.



Unlike our wireless system, CCTV requires a power source but comes with the added benefits of 4K high definition imaging which can be used for identification purposes, remote access via customer devices and sophisticated detection software to filter false activations.



- HD 4K QUALITY ● 24/7 RECORDING ● APP TO VIEW SITE 24/7
- WATCH ON MULTIPLE DEVICES ● TIME-LAPSE AND ANPR CAMERA SYSTEMS
- VEHICLE & HUMAN DETECTION REDUCES FALSE ACTIVATIONS

ALARM **MONITOR** **RESPOND**



Wireless video verification alarm

Ideal for Construction sites, vacant properties and other remote locations without power and internet connection

Given the alarms wireless and battery-operated capabilities it can be installed anywhere within a matter of hours and due to the systems portability, it can be adjusted and relocated as a site evolves with ease.

The PIRs have integrated cameras which generate 10 second video clips upon activation. The alarms

are then sent through to our NSI Gold accredited monitoring station for verification within seconds. In the event of a genuine security breach an approved responder will be dispatched to site.

The system has up to a 4 year battery life expectancy based on average conditions and all systems are fully maintained by Sicuro, giving you a cost effective and hassle-free security solution.

- BATTERY OPERATED ● UP TO 4 YEARS BATTERY LIFE
- WEATHERPROOF ● GPRS RADIO COMMUNICATION
- FITTED ANYWHERE ● 100% WIRELESS



Reconeyez camera

- MILITARY GRADE ● 2 LENSES DAY / NIGHT
- 35M PIR DETECTION ● LITHIUM BATTERY UP TO 2 YEARS
- REMOTE MAINTENANCE ● 4G SIM CARD ● HD VIDEO

0800 999 1888 | info@sicuro.co.uk

www.sicuro.co.uk



The ultimate deter and detect solution for your site security

The innovative BauWatch GreenLight for the ultimate solution for intruder prevention and detection

GreenLight for project security

If you are responsible for a burglary-prone construction project, vacant property or a storage site for building materials, you'll also want to ensure nobody can enter to steal or vandalise the premises outside of working hours.

Apart from loss and damage caused by burglary, the construction project can also suffer delays. In addition to the commercial implications of a delay, there's a potential impact on personal and company reputation.

Prevention and Detection

The BauWatch GreenLight allows you to kill two birds with one stone: prevention and detection.

Most vandals are deterred by the bright green light and run away. Those who do make an attempt to break in are immediately detected.

Our 24/7 emergency room views the razor-sharp video recordings online and ensures the culprits get arrested.

The BauWatch GreenLight is ideal for:

- Construction site security
- Real estate and vacant property
- Parking security

Technical Specifications:

Camera detection range:
Maximum 100m detectable range with a tamper PTZ Camera to protect the tower

Type of detection:
Video analysis for reliable detection 180° field of view.
Live audio and siren

Internet connection:
Integrated secure Internet connection

Power supply:
230V with 48Hr backup battery

Alarm follow-up:
24/7 connection with our emergency centre

Lights:
2 x Green LED floodlights incorporated into the tower

Required space:
2.5m x 2.5m

Dimensions:
520kg/6.20m height



Powering your site progress with the all-weather 24/7 surveillance solution... no plug needed!

Don't let bad weather stop your progress. Secure your site surveillance with the BauWatch Solar.

A sunny solution, even in bad weather

You don't want theft or vandalism to impact on your project delivery date. Even if there is no power supply for a surveillance system at your construction site, you still need reliable security. That is why you choose a high-functioning security system that is always working for you, come rain or shine. For example, camera surveillance that runs on solar energy with a 'bad-weather guarantee'. If clouds block out the sunlight, the system automatically switches to an alternative built-in energy source.

Environmentally friendly back up

CO2-neutral is currently a hot topic, and this includes construction sites. Convenience is what matters to you. BauWatch provides an excellent solution in the form of the Solar: this easy-to-move stand-alone camera is equipped with solar panels and a fuel cell on methanol. Thanks to the direct connection to our 24/7 control room, your construction site is always being effectively monitored. So, you can be environmentally

friendly, whilst ensuring the progress of your construction project.

The BauWatch Solar is ideal for

- Construction sites without power supply
- Infrastructure projects
- Wind and solar farms

Technical Specifications:

Camera detection range:
Maximum 100m

Type of detection:
Video analysis for reliable detection

Internet connection:
Integrated secure Internet connection

Power supply:
Fuel cell, 3 solar panels and 48-hour back-up battery

Alarm follow-up:
24/7 connection with our emergency centre

Lights:
Standard IR LED or none

Required space:
2.5m x 2.5m

Dimensions:
725kg/6.64m



- 48 HOUR BACK UP BATTERY ● 2 PTZ CAMERAS THAT HAVE A MAXIMUM 100M DETECTABLE RANGE WITH A TAMPER PTZ CAMERA TO PROTECT THE TOWER
- 180 DEGREE FIELD OF VIEW ● 2 X GREEN LED FLOODLIGHTS ● LIVE AUDIO AND SIREN

- MAXIMUM 100 METRE CAMERA DETECTABLE RANGE WITH 180 DEGREE FIELD OF VIEW.
- 2 X GREEN LED FLOODLIGHTS INCORPORATED INTO THE TOWER
- LIVE AUDIO AND SIREN

ALARM **MONITOR** **RESPOND**

0800 999 1888 | info@sicuro.co.uk

www.sicuro.co.uk



36.5° C

36.3° C

36.7° C

Thermo screen

Our Temperature Screening Solution is able to detect body temperature which may indicate the presence of a fever, a symptom of the Coronavirus (COVID-19) from a safe distance.

The most recent threat to the construction industry is the COVID-19 pandemic which has caused largescale disruption to building projects across the UK. Many companies were forced to halt work during the first few weeks of lockdown, but construction workers are now back on site. Careful planning and social distancing regulations now need to be followed to ensure the safety of all personnel.

To prevent the spread of COVID-19, any construction worker who feels unwell will be advised that they must stay at home.

However, construction companies can go one step further in preventing an outbreak by investing in a temperature scanner at the entrance of the site.



- HIGH ACCURACY ● INTELLIGENT ANALYSIS
- SAFE & CONTACTLESS MEASUREMENT
- MULTI TARGET MEASUREMENT ● HIGH EFFICIENCY

ALARM **MONITOR** **RESPOND**



Handheld thermal camera

Safer, smarter, faster fever screening

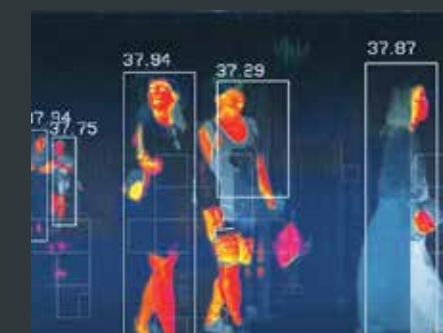
The handheld thermal camera, specially designed for body temperature measurement.

It's equipped with a 160x120 resolution thermal detector.

It is capable to discover and track people with higher body temperature among the crowded public area, it can be widely used in places such as customs, airport, school and hospital for inspection and quarantine.



DISCOUNTS
AVAILABLE FOR
LARGE ORDERS



- 160 × 120 RESOLUTION (THERMAL) ● THERMOGRAPHIC ACCURACY UP TO ±0.5 °C
- 8 HOUR BATTERY LIFE WITH CONTINUOUS USE
- 320 × 240 RESOLUTION 2.4" LCD TOUCH DISPLAY



0800 999 1888 | info@sicuro.co.uk

www.sicuro.co.uk



Timelapse

Ideal for an ongoing development helping you see the historical and ongoing development of your build



Timelapse footage is the ideal monitoring and marketing tool for your build. You will have the ability to oversee work, track progress and pay close attention to detail with Ultra High Definition images available to you when required.

Timelapse cameras allow for the capture of the smallest of changes throughout the progress of a build.

If you haven't done so already, why not think about adding a time lapse element to your construction project?

Finished films are great for showcasing on your website and social media, at trade shows and through a host of other marketing channels.

 **ALARM**  **MONITOR**  **RESPOND**



Fire protection alarms & systems

A necessity for any construction site

Our fire alarm system is robust, specifically designed for construction sites. The fire protection system has a fully wireless security alarm system capability, operating on batteries alone, meaning it's very easy to install, maintain, and is extremely adaptable as your site evolves

The guidance for fire warning systems on construction sites is set out in the HSE publication: Fire Safety on Construction Sites (HSG 168).

"The aim of any fire warning system is to ensure that people on site are alerted to make their escape before a fire becomes life-threatening.

The essential requirements of the fire warning signal are that it is distinctive, clearly audible above any other noise and is recognised by all the people on site."

Our construction site temporary fire alarm system has been designed to meet these requirements and furthermore the British Standards BS 5839-1 and BS EN54.

Sicuro are proud to have Fire designers that will design your fire system in accordance with BS5839 Part 1 2017.



AVAILABLE ON FLEXIBLE CONTRACT TERMS AND WE OPERATE 24/7 TO ENSURE THE SAFETY OF YOUR SITE

0800 999 1888 | info@sicuro.co.uk

www.sicuro.co.uk



23 Saffron Court
Southfields Industrial Estate
Laindon, Essex SS15 6SS

0800 9991 888

info@sicuro.co.uk

www.sicuro.co.uk

